



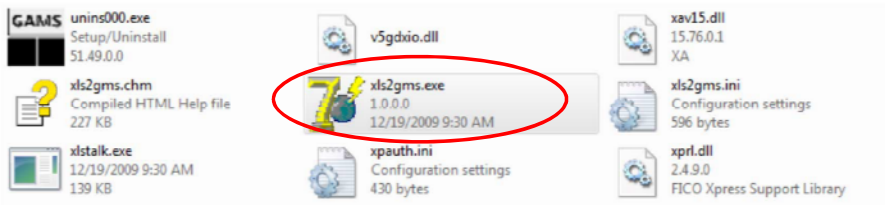
4. GAMS and Other Applications

4.1. GAMS/Excel

4.1.1. Converting Data to GAMS

From wherever your gams system directory is, run “XLS2GMS.exe”.
For GAMSIDE users, this may be:

C:\Program Files\GAMS





4. GAMS and Other Applications

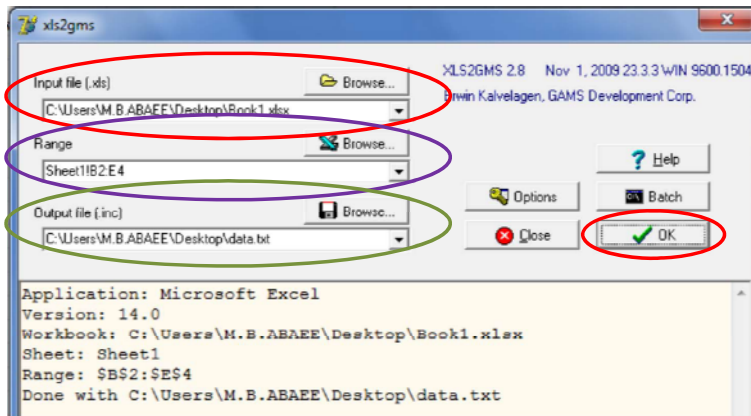
4.1. GAMS/Excel ...

4.1.1. Converting Data to GAMS ...

Input file (*.XLS)

Range

Output GAMS
Include file (*.txt
or *.inc)





4. GAMS and Other Applications

4.1. GAMS/Excel ...

4.1.1. Converting Data to GAMS ...

```

* -----
* XLS2GMS 2.8      Nov  1, 2009 23.3.3 WIN 9600.15043 VIS x86/MS Windows
* Erwin Kalvelagen, GAMS Development Corp.
* -----
* Application: Microsoft Excel
* Version:      14.0
* Workbook:    C:\Users\M.B.ABAEE\Desktop\Book1.xlsx
* Sheet:       Sheet1
* Range:       $R$2:$F$4
* -----
                new-york  chicago  topeka
seattle  2.5      1.7      1.8
san-diego 2.5      1.8      1.4
* -----

```

```

TABLE d(i, j)
$include data.txt
;

```





4. GAMS and Other Applications

4.1. GAMS/Excel ...

4.1.2. Import Data from Excel

When calling **XLS2GMS** directly from GAMS we want to specify all command and options directly from the command line or from a command file.

Command is:

```
$call = xls2gms I="C:\test.xls" O="C:\data.txt" R=Sheet1!B1:E10
```

- Command Statement
- I=inputfilename
- O=inputfilename
- Sheet of excel
- Range of sheet





4. GAMS and Other Applications

4.1. GAMS/Excel ...

4.1.2. Import Data from Excel ...

```
SET    i /  
$call = xls2gms  I=Book1.xlsx O=setI.txt R=Sheet2!A1:A3  
$include setI.txt  
/  
      j /  
$call = xls2gms  I=Book1.xlsx O=setJ.txt R=Sheet2!B1:B3  
$include setJ.txt  
/;  
TABLE d(i, j)  
$call = xls2gms  I=Book1.xlsx O=Data.txt R=Sheet1!B2:E4  
$include data.txt  
;
```

